

Dear students, parents and guardians,

This is our first newsletter in PDF format. This format allows us to show complete games with diagrams, so I hope that you'll like it. If you received this newsletter in printed form and would like to begin receiving it via email, please email me at [baburin@gmail.com](mailto:baburin@gmail.com) Note that these newsletters will also be posted at [www.gmsquare.com](http://www.gmsquare.com)

## **Two Easter Chess Camps**

My colleague Michael Crowe and I will be running two 4-day chess camps this Easter. The first one is in Malahide. The dates are April 18-21. The second camp is in Booterstown (April 26-29). You can download the application forms (which have more information about the camps) online:

Malahide camp - <http://www.icu.ie/events/forms/360.pdf>

Booterstown camp - <http://www.icu.ie/events/forms/361.pdf>

The fee is €90 for one child. There was a €20 discount for early bookings (before 1st of April). As this newsletter is coming out later than anticipated, I am happy to extend this **discount** if you pay before April the 6th. To arrange that, please call me on 087-968-2378.

## **Junior tournament on the 9th of April**

I will be running another 6-round tournament for juniors soon. Please note the new venue – the D4 Hotel in Ballsbridge (formerly Jurys). The tournament will take place in the ballroom – ask at the reception for directions. Parking at the hotel isn't cheap (€1 for 30 minutes), but the hotel is offering a special deal - €5 for the day. To avail of that, ask at the reception and mention our tournament.

That said, parents do not have to stay for the whole tournament but are welcome to drop their children off and collect them at the end.

This tournament is suitable for players of all levels – beginners are welcome. These kinds of tournaments are essential for improving a young player's skill. Playing against juniors from other schools is a great opportunity for mutual learning and improvement, therefore I strongly recommend everyone hoping to improve their chess to attend. This has been visible in the last few tournaments, where I have observed the standard of play steadily improving each time.

The entry fee is 10 euro. Chess sets will be provided. There will be lots of prizes and a 30-minute master-class. Players register on the day. Registration will start at 2.00 pm and play will start at about 3.00. If you need to arrive late (i.e. around 3 o'clock), let me know, so we can put your name into the tournament. The prize-giving will be at 5.50 pm. There will be a chess stall at the tournament, from which you may purchase books, sets, clocks, software, etc. If you need more information, e-mail me at [baburin@gmail.com](mailto:baburin@gmail.com) or call me on 087-968-2378.

## **Chess Workshops on the 10th of April**

For a long time I've been planning to organise workshops for juniors, based on a time-tested Russian chess model, wherein the best junior players from different schools went to study with their peers. It's time to test this model here, so I will be running two workshops in the D4 Hotel in Ballsbridge (formerly Jurys) next weekend. There will be a lesson, practice games and tactical tests. The first workshop (14:00 to 16:00) is for players who recently started chess and need/want more practice.

The second one (16:00 to 18:00) is for more advanced players. If in doubt as to what group you should go to, ask your chess instructor in your school. If you've played in our junior tournaments and scored 3.5 points out of 5 (or more) or 4 points out of 6 (or more), then you should probably enter the advanced group.

The fee is €15. The registration and friendly games will take place for the first 20 minutes of each workshop, with a lesson, more games and tests to follow. There are strictly 30 places available in each group, so we strongly advise registering in advance to avoid disappointment. To do so, e-mail me at [baburin@gmail.com](mailto:baburin@gmail.com) or call me on 087-968-2378. Payment will be accepted on the day.

We plan to hold 2-3 more workshops before the summer holidays, resuming them on a regular basis (bi-weekly) in September. If you cannot attend one of them, you can still attend others as we will be covering different material each time.

## **Results of our March tournament**

There were 104 players taking part in the competition – it was our biggest tournament yet (there were 96 players in the January tournament). It went really well and I believe that everyone enjoyed the tournament.

Here are the results:

- |                    |            |
|--------------------|------------|
| 1. Michael Higgins | 5.5 points |
| 2. Fiachra Scallan | 5.5 points |

Six players tied for third place with 5 points each. These were Peter Cooke, Rory Ellard, James Maguire, David Halpenny, Nadeem Naber and Pacome De Loisy.

Tara Coveney won the 'best girl' trophy, having scored 3.5 points. Aisling Whelan also got 3.5 points, but had a worse tiebreak score.

Pupils from 37 different schools took part in the tournament. The biggest 'team' was from Holly Park school in Blackrock, with 10 players attending. Scoil Bhride (Ranelagh) and St. Mary's NS in Donnybrook had 7 players each. There were 6 players from St. Mary's BNS in Monaghan, 5 players from St Conleth's College and Castle Park, and 4 players each from Divine Word (Ballinteer) and Pope John Paul II NS (Malahide).

## **The Irish Junior Chess Championships**

This tournament will take place on Apr 15-17 Ballinasloe. Note that different age groups compete over 1, 2 or 3 days. I encourage our students to take part in this event. For more information, visit <http://www.icu.ie/events/display.php?id=325>

Note that our tournament on the 9th of April and our workshops on the 10th of April will help young players to prepare for the Irish Junior Championships.

## **Junior Chess Ratings**

The Leinster Schools Chess Association now calculates ratings of junior players. Our March tournament has been rated. You can see the latest rating list at <http://www.juniorchessclub.com/l sca/ratings/ratings-2011-01-19.php>

With all questions concerning your rating, please contact David Murray at [davidmurray11@gmail.com](mailto:davidmurray11@gmail.com)

## **Chess on YouTube**

I recently came across a very clever video on YouTube, featuring clay animation and a nice chess game. Go to <http://www.youtube.com/watch?v=YXM3wrIhcwY> and enjoy the following great game, played in Hamburg in 1910.

This game is featured in this newsletter. If you want to replay it on a chess board at home, here are few hints concerning chess notation.

N – knight, B – bishop, Q – queen, R – rook, K – king (below we used figurines)

The number before the move represents which move number it is, for example 1.e2-e4 means that White advanced his e2-pawn to e4 on his first move, 3.Ng1-f3 means that on his third move, White plays his knight from g1 to f3, and 4.Bc4 Bc5 means that on the fourth move, White moved his bishop to c4 and Black moved his bishop to c5. Moves in bold represent the actual moves played in the game, while moves not in bold represent other possible continuations. Set up the board so that the white pieces occupy the rows(ranks) marked 1 and 2

Note the following symbols, commonly used in chess:

- '+' check
- '!' good move
- '!!' great move
- '?' poor move
- '??' horrible move
- 0-0 Castling
- 0-0-0 Queenside Castling
- # Checkmate
- 'x' denotes a capture.

For example Bb5xc6+ means that the bishop on b5 took a piece/pawn on c6 while also delivering check.

## Roesch – Schlage Hamburg, 1910

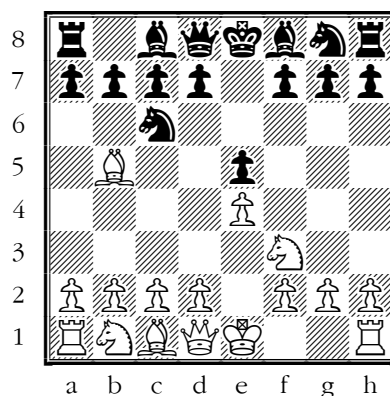
**1.e2-e4 e7-e5 2.♘g1-f3**

White is now attacking the e5-pawn.

**2...♞b8-c6**

Black develops his knight and defends the pawn.

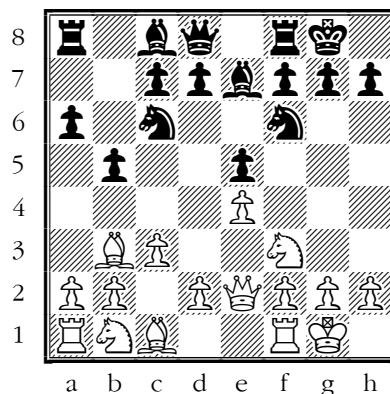
**3.♕f1-b5 (D)**



**3...a7-a6 4.♕b5-a4**

White could not yet win a pawn as after 4.♕b5xc6 d7xc6 5.♘f3xe5 ♚d8-d4 Black forks the knight and the e4-pawn, winning it back.

**4...♞g8-f6 5.♚d1-e2 b7-b5 6.♕a4-b3 ♕f8-e7 7.c2-c3 0-0 8.0-0 (D)**



Both players have castled, keeping their kings safe. White is ready to play d2-d4, building a powerful pawn centre, but Black attacked the centre first:

**8...d7-d5**

With this move Black sacrifices a pawn. In chess a sacrifice in the opening is called a gambit, from Italian *gambito*. White did not have to accept the sacrifice – he could play 9.d3.

**9.e4xd5 ♘f6xd5 10.♘f3xe5 ♞d5-f4 11.♚e2-e4**

Note that 11.♘e5xc6?? (attacking the d8-queen) would lose the game as Black takes the white queen with a check!

**11...♞c6xe5 (D)**

